

shimmer PRECUTS

by Deborah Edwards

METALLIC

MIDNIGHT SKY

BLURRED LINES

Finished Size 50" x 64"

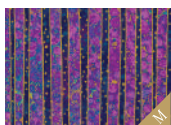
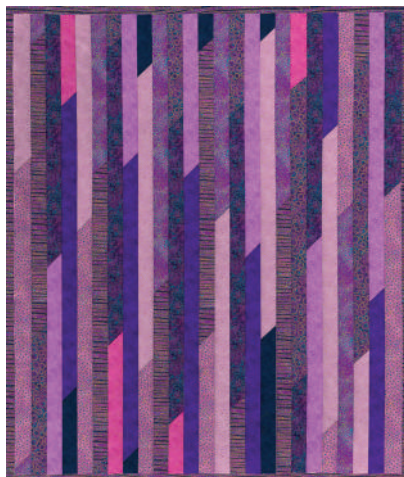
All seams are sewn using a ¼" seam allowance

Requirements:

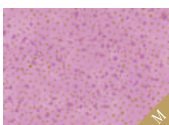
1 Shimmer Strip Pack

½ yd - 22996M-68 Binding

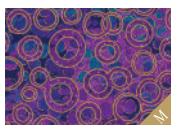
3 ¼ yds - 22992M-68 Backing



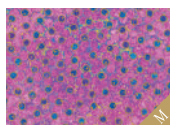
22996M-85



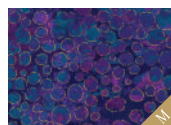
22995M-85



22992M-85



22994M-85



22991M-85



22993M-85



9050M-84



9050M-28



9050M-88



9050M-49

Instructions:

1. Sew strips together in random order using a diagonal seam to make one long strip (as you would for making binding strips).
2. From the long strip made in step 1, cut 25 - 64" strips.
3. Using a ¼" seam allowance, sew strips together along the long edges, randomly placing the strips to your liking. Refer to the quilt image and/or use a design wall for strip placement prior to sewing.

Tip: Sew strips together from alternate ends to minimize skewing in one direction and to keep the quilt top as "squared up" as possible. Pinning is also recommended for the same reason.

4. From binding fabric, cut 6 - 2 ¼" x WOF strips and join together.
5. Layer quilt top, batting & backing. Quilt and bind as desired.

SSHIMMR40-85

shimmer PRECUTS

by Deborah Edwards

METALLIC

DEEP BLUE SEA

BLURRED LINES

Finished Size 50" x 64"

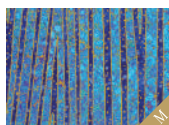
All seams are sewn using a ¼" seam allowance

Requirements:

1 Shimmer Strip Pack

½ yd - 22996M-44 Binding

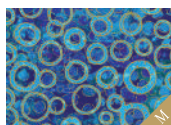
3 ¼ yds - 22992M-44 Backing



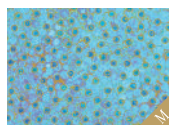
22996M-44



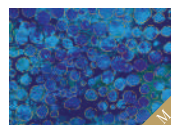
22995M-44



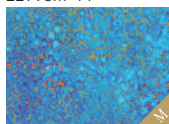
22992M-44



22994M-44



22991M-44



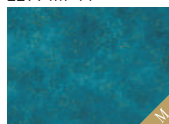
22993M-44



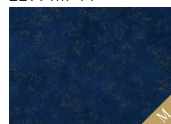
9050M-64



9050M-61



9050M-67



9050M-49

Instructions:

1. Sew strips together in random order using a diagonal seam to make one long strip (as you would for making binding strips).
2. From the long strip made in step 1, cut 25 - 64" strips.
3. Using a ¼" seam allowance, sew strips together along the long edges, randomly placing the strips to your liking. Refer to the quilt image and/or use a design wall for strip placement prior to sewing.

Tip: Sew strips together from alternate ends to minimize skewing in one direction and to keep the quilt top as "squared up" as possible. Pinning is also recommended for the same reason.

4. From binding fabric, cut 6 - 2 ¼" x WOF strips and join together.
5. Layer quilt top, batting & backing. Quilt and bind as desired.

SSHIMMR40-42

shimmer PRECUTS

by Deborah Edwards

METALLIC
LAGOON

BLURRED LINES

Finished Size 50" x 64"

All seams are sewn using a ¼" seam allowance

Requirements:

1 Shimmer Strip Pack

½ yd - 22996M-63 Binding

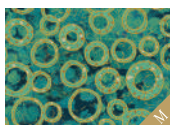
3 ¼ yds - 22992M-63 Backing



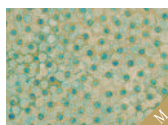
22996M-63



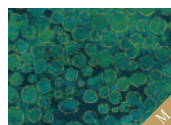
22995M-63



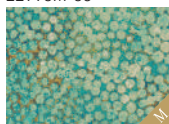
22992M-63



22994M-63



22991M-63



22993M-63



9050M-12



9050M-70



9050M-66



9050M-67

Instructions:

1. Sew strips together in random order using a diagonal seam to make one long strip (as you would for making binding strips).
2. From the long strip made in step 1, cut 25 - 64" strips.
3. Using a ¼" seam allowance, sew strips together along the long edges, randomly placing the strips to your liking. Refer to the quilt image and/or use a design wall for strip placement prior to sewing.

Tip: Sew strips together from alternate ends to minimize skewing in one direction and to keep the quilt top as "squared up" as possible. Pinning is also recommended for the same reason.

4. From binding fabric, cut 6 - 2 ¼" x WOF strips and join together.
5. Layer quilt top, batting & backing. Quilt and bind as desired.

SSHIMMR40-63

shimmer PRECUTS

by Deborah Edwards

METALLIC

CORAL REEF

BLURRED LINES

Finished Size 50" x 64"

All seams are sewn using a 1/4" seam allowance

Requirements:

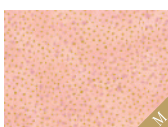
1 Shimmer Strip Pack

1/2 yd - 22996M-26 Binding

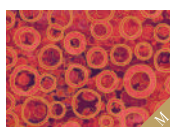
3 1/4 yds - 22992M-26 Backing



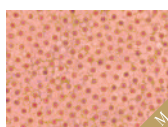
22996M-26



22995M-26



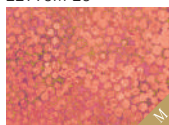
22992M-26



22994M-26



22991M-26



22993M-26



9050M-56



9050M-26



9050M-55



9050M-110

Instructions:

1. Sew strips together in random order using a diagonal seam to make one long strip (as you would for making binding strips).
2. From the long strip made in step 1, cut 25 - 64" strips.
3. Using a 1/4" seam allowance, sew strips together along the long edges, randomly placing the strips to your liking. Refer to the quilt image and/or use a design wall for strip placement prior to sewing.

Tip: Sew strips together from alternate ends to minimize skewing in one direction and to keep the quilt top as "squared up" as possible. Pinning is also recommended for the same reason.

4. From binding fabric, cut 6 - 2 1/4" x WOF strips and join together.
5. Layer quilt top, batting & backing. Quilt and bind as desired.

SSHIMMR40-26

shimmer PRECUTS

by Deborah Edwards

METALLIC

ICEBERG

BLURRED LINES

Finished Size 50" x 64"

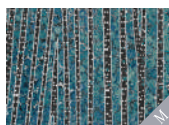
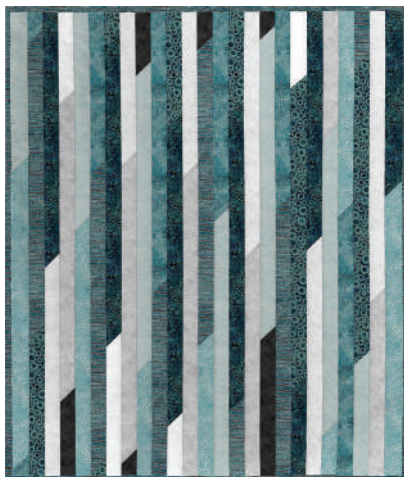
All seams are sewn using a 1/4" seam allowance

Requirements:

1 Shimmer Strip Pack

1/2 yd - 22996M-68 Binding

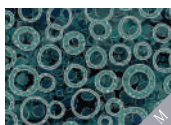
3 1/4 yds - 22992M-68 Backing



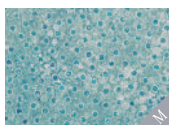
22996M-68



22995M-68



22992M-68



22994M-68



22991M-68



22993M-68



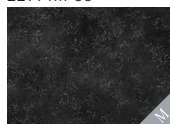
9050M-100



9050M-91



9050M-93



9050M-99

Instructions:

1. Sew strips together in random order using a diagonal seam to make one long strip (as you would for making binding strips).
2. From the long strip made in step 1, cut 25 - 64" strips.
3. Using a 1/4" seam allowance, sew strips together along the long edges, randomly placing the strips to your liking. Refer to the quilt image and/or use a design wall for strip placement prior to sewing.

Tip: Sew strips together from alternate ends to minimize skewing in one direction and to keep the quilt top as "squared up" as possible. Pinning is also recommended for the same reason.

4. From binding fabric, cut 6 - 2 1/4" x WOF strips and join together.
5. Layer quilt top, batting & backing. Quilt and bind as desired.

SSHIMMR40-68

shimmer PRECUTS

by Deborah Edwards

METALLIC

BLACK EARTH

BLURRED LINES

Finished Size 50" x 64"

All seams are sewn using a 1/4" seam allowance

Requirements:

1 Shimmer Strip Pack

1/2 yd - 22996M-98 Binding

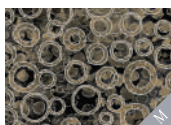
3 1/4 yds - 22992M-98 Backing



22996M-98



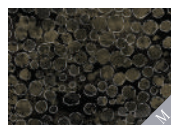
22995M-98



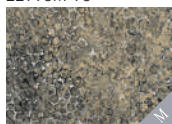
22992M-98



22994M-98



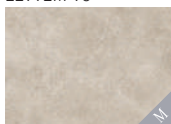
22991M-98



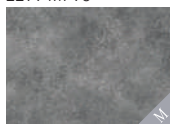
22993M-98



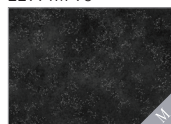
9050M-14



9050M-15



9050M-95



9050M-99

Instructions:

1. Sew strips together in random order using a diagonal seam to make one long strip (as you would for making binding strips).
2. From the long strip made in step 1, cut 25 - 64" strips.
3. Using a 1/4" seam allowance, sew strips together along the long edges, randomly placing the strips to your liking. Refer to the quilt image and/or use a design wall for strip placement prior to sewing.

Tip: Sew strips together from alternate ends to minimize skewing in one direction and to keep the quilt top as "squared up" as possible. Pinning is also recommended for the same reason.

4. From binding fabric, cut 6 - 2 1/4" x WOF strips and join together.
5. Layer quilt top, batting & backing. Quilt and bind as desired.

SSHIMMR40-98

shimmer PRECUTS METALLIC SAND

by Deborah Edwards

BLURRED LINES

Finished Size 50" x 64"

All seams are sewn using a 1/4" seam allowance

Requirements:

1 Shimmer Strip Pack

1/2 yd - 22996M-12 Binding

3 1/4 yds - 22992M-12 Backing



22996M-12



22995M-12



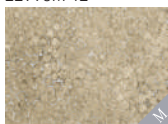
22992M-12



22994M-12



22991M-12



22993M-12



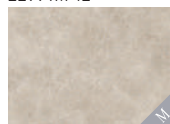
9050M-100



9050M-14



9050M-16



9050M-15

Instructions:

1. Sew strips together in random order using a diagonal seam to make one long strip (as you would for making binding strips).
2. From the long strip made in step 1, cut 25 - 64" strips.
3. Using a 1/4" seam allowance, sew strips together along the long edges, randomly placing the strips to your liking. Refer to the quilt image and/or use a design wall for strip placement prior to sewing.

Tip: Sew strips together from alternate ends to minimize skewing in one direction and to keep the quilt top as "squared up" as possible. Pinning is also recommended for the same reason.

4. From binding fabric, cut 6 - 2 1/4" x WOF strips and join together.
5. Layer quilt top, batting & backing. Quilt and bind as desired.

SSHIMMR40-12